



# AUCTION

**LEADING THE INDUSTRY SINCE 1945**

**WEDNESDAY – MARCH 22, 2017 – 6:00 PM**

## 13 Acres – Sold In 2 Parcels

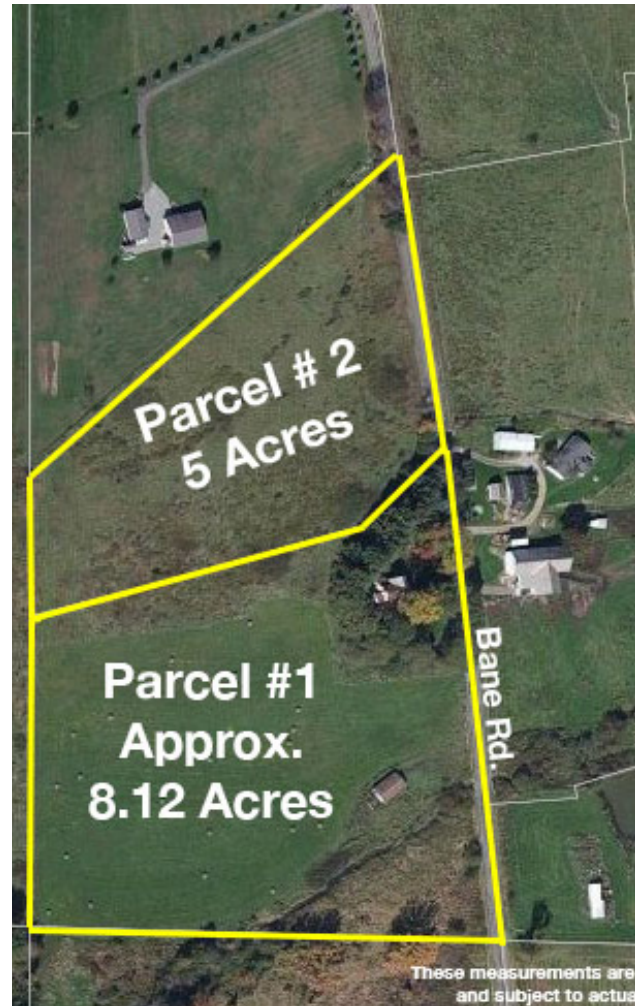
**BUY ONE OR BOTH – OLD HOMESTEAD**

East Twp. – Carroll County – Carrollton Schools

Absolute auction, all sells to the highest bidder(s) on location:

**9025 BANE RD. NE, KENSINGTON, OH 44427**

**Directions:** Take SR 9 south of RT 30 to Montgomery Rd., go south to Bane, and south to auction. Watch for KIKO signs.



These measurements are  
and subject to actual

Information is believed to be accurate but not guaranteed.



**330.455.9357 • kikoauctions.com**



**PARCEL #1:** Approx. 8.12 acres with 565' frontage. Old homestead (home needs razed) & pole barn. Mostly open & brushy ground.

**PARCEL #2:** Adjoining 5-acre tract with approx. 400' frontage. Hilltop views & brush open ground.

**NOTE:** Walk land at your convenience. Buy one or both. All mineral rights owned by seller shall transfer subject to leases of record. No zoning. Nice country parcels.

**TERMS ON REAL ESTATE:** 15% down auction day, balance due at closing. A 10% buyer's premium will be added to the highest bid to establish the purchase price, which goes to the seller. Any desired inspections must be made prior to bidding. All information contained herein was derived from sources believed to be correct. Information is believed to be accurate but not guaranteed.

**AUCTION BY ORDER OF:** William & Brenda Mayles  
**AUCTIONEER/REALTOR:** Matthew P. Kiko, AARE, 330-327-9617  
**REALTOR:** Tara King, 330-205-7290



**330.455.9357 • kikoauctions.com**

